

A wide variety ...

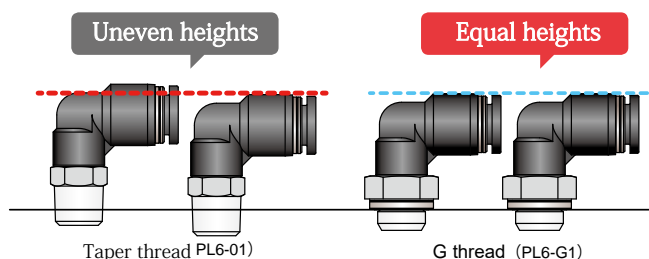
Push-in Connect

with

G Thread



Equal heights of fittings with G thread helps the machine design with less tolerance.



PISCO offers a variety of fittings with G threads including Mini-type

▶ Different type of thread

- PISCO provides a variety of threads not only G thread but also NPT, UNF, R and Metric thread.

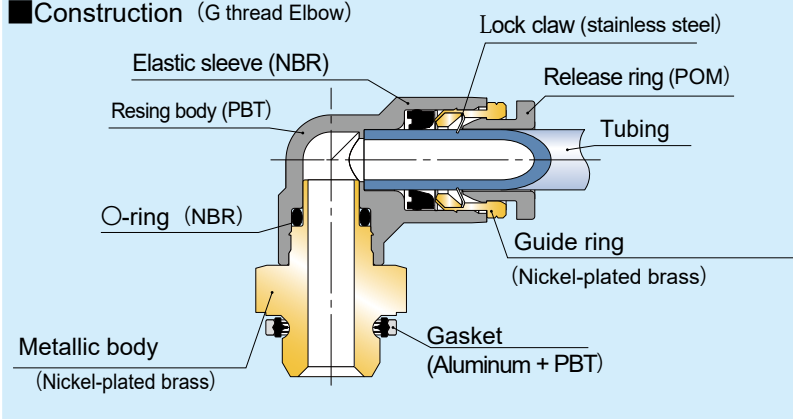
Fluid	Air, Water (Conditional※)
Maximum service pressure	145psi (1.0MPa)
Vacuum pressure	-29.5 in.Hg (-100kPa)
Service temperature range	32 ~ 140 °F (0 ~ 60°C) (no freezing)

※. Mini type of fitting cannot be used with water.

⚠ Warning

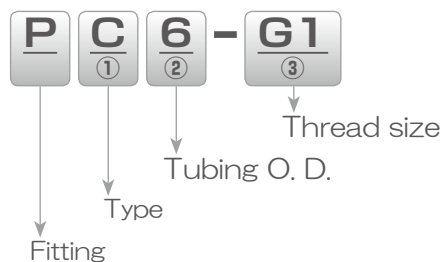
- ※. Make sure to follow the instructions below when the fluid medium is water.
 1. Surge pressure must be controlled lower than max. operating pressure.
 2. Tap water can be used. Consult with PISCO for using other kind of water.
 3. Be sure to place Insert Ring into the tube edge when using water as a fluid medium.

■ Construction (G thread Elbow)



Model designation (example)

Push-in fitting



①. Type

Code	Type	Code	Type	Code	Type	Code	Type
C	Straight	OC	Hex Key Straight	L	Elbow	LL	Long Elbow
H	Banjo	HF	Link-up Banjo	OL	Hex Key Banjo	B	Tee
D	Branch Tee	X	Branch Y	AX	Twin Neck Elbow	A	Twin Neck Banjo
AF	Link-up Twin Neck Banjo	HW	Double Banjo	HT	Triple Banjo	AW	Double Twin Neck Banjo
AT	Triple Twin Neck Banjo	CF	Female Straight	MF	Panel Mount Female Straight	LF	Female Elbow
FF	Female thread fitting						

②. Tubing O.D.

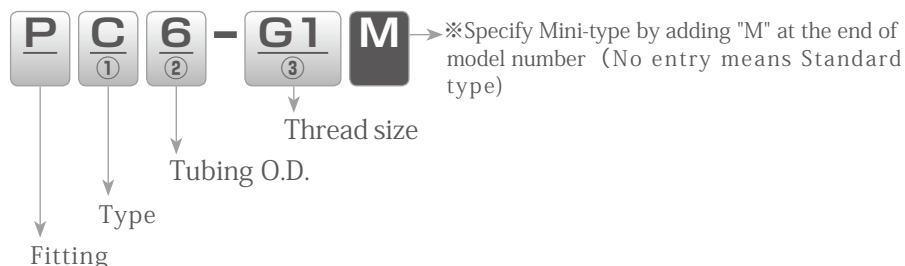
Code	4	6	8	10	12	16
Tubing O.D. (mm)	ø4	ø6	ø8	ø10	ø12	ø16

③. Thread size

Code	G1	G2	G3	G4
Size	G1/8	G1/4	G3/8	G1/2

Model designation (example)

Mini type Push-in fitting



①. Type

Code	Type	Code	Type	Code	Type	Code	Type
C	Straight	OC	Hex Key Straight	L	Elbow	LL	Long Elbow
B	Tee	D	Branch Tee				

②. Tubing O.D.

Code	4	6
Tubing O.D. (mm)	ø4	ø6

③. Thread size

Code	G1
Size	G1/8

※ Clean-room package or Clean-wash package: POM gasket

△ Detailed Safety Instructions

Before using PISCO products, be sure to read "Safety Instructions" and "Common Safety Instructions for Products Listed in This Catalog" and "Common Safety Instructions for Fittings".

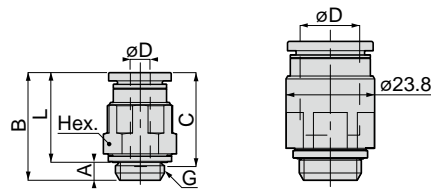
Warning

1. When the fluid medium is water, do not use Tube Fitting Standard Series unless the operating environment meets all the described specifications in the catalog. Otherwise, it may cause damage to the products, the escape of tubes and a fluid leakage.

Caution

1. To adjust the direction of the elbow fitting after fixing PML (Bulkhead Union Elbow) type, turn it in the clockwise (right) direction.
2. Attach a rubber washer to the aluminum nut side when installing PML (Bulkhead Union Elbow) type. The bulkhead parts may be loosened or the rubber washer may deform if attaching it to the hexagonal side.

PC Straight



PC16-G3

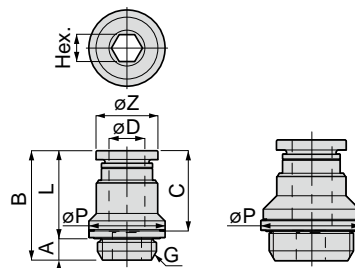
Unit : mm

Model	Tubing O.D. øD	G	A	B	L	Tube end C	Hex.	Orifice dia. (ømm)	Weight (g)	Price (\$)
PC4-G1	4	G1/8A	4.2	19.5	15.3	14.9	13	3	9.1	2.00
PC6-G1	6	G1/8A	4.2	20.6	16.4	17	13	5	8.3	2.00
PC6-G2		G1/4A	4.8	21.2			17		17	2.27
PC8-G1	8	G1/8A	4.2	25.8	21.6	18.2	14	6	13	2.23
PC8-G2		G1/4A	4.8	21.9			17		15	2.59
PC8-G3		G3/8A	5.8	21.7			19		22	2.73
PC10-G2	10	G1/4A	4.8	28.9	24.1	20.7	17	8.5	21	2.68
PC10-G3		G3/8A	5.8	25.4			19		22	3.05
PC10-G4		G1/2A	6.8	26.1			24		43	4.27
PC12-G2	12	G1/4A	4.8	34.1	29.3	23.3	21	8.5	39	3.55
PC12-G3		G3/8A	5.8	31.5					25.7	33
PC12-G4		G1/2A	6.8	28			21.2		24	39
PC16-G3	16	G3/8A	5.8	37.3	31.5	24.8	22	11	45	7.91
PC16-G4		G1/2A	6.8	35.3			28.5		24	51

※ Orifice dia. is figured out by converting the narrowest path to the diameter.

※ "L" represents the length including the thickness of the gasket before installation. Actual dimension comes in 0.4mm shorter after installation since it is crushed by the thread being tightened.

POC Hex Key Straight



POC8-G3,
POC10-G3

Unit : mm

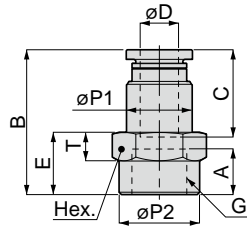
Model	Tubing O.D. øD	G	A	B	L	Tube End C	Hex.	øP	øZ	Orifice dia. (ømm)	Weight (g)	Price (\$)	
POC4-G1	4	G1/8A	4.2	19.5	15.3	14.9	2.5	13	9.9	2.6	7.7	2.18	
POC6-G1	6	G1/8A	4.2	21.6	17.4	17	4	13	11.8	4.2	8.3	2.27	
POC6-G2		G1/4A	4.8	20.2				15.4			17	13	2.64
POC8-G1	8	G1/8A	4.2	25.8	21.6	18.2	5	13.7	13.8	5.3	12	2.45	
POC8-G2		G1/4A	4.8	24.4			19.6				6	14	2.82
POC8-G3		G3/8A	5.8	23.9			18.1				20	20	3.18
POC10-G1	10	G1/8A	4.2	28.3	24.1	20.7	5	17	16.8	5.3	19	3.00	
POC10-G2		G1/4A	4.8	28.9			7				20	20	3.18
POC10-G3		G3/8A	5.8	26.4	20.6		20				22	3.45	
POC12-G3	12	G3/8A	5.8	31.5	25.7	23.3	8	20.8	19.8	8.4	34	4.09	
POC12-G4		G1/2A	6.8	28				21.2			25.5	33	4.91

※ Orifice dia. is figured out by converting the narrowest path to the diameter.

※ "L" represents the length including the thickness of the gasket before installation. Actual dimension comes in 0.4mm shorter after installation since it is crushed by the thread being tightened.

※ "P" represents the maximum diameter of the metallic body or the gasket.

PCF Female Straight

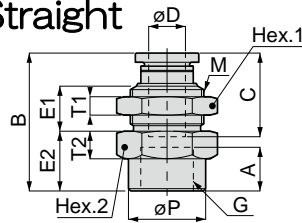


Unit : mm

Model	Tubing O.D. øD	G	A	B	E	øP1	øP2	Tube End C	Hex.	T	Orifice dia. (ømm)	Weight (g)	Price (\$)
PCF4-G1	4	G1/8	7	23.9	10	9.7	13.8	14.9	14	5	3	13	2.36
PCF4-G2		G1/4	9.5	26.9	13		17.6		17	6		21	3.00
PCF6-G1	6	G1/8	7	26	10	11.8	13.8	17	14	5	5	15	2.55
PCF6-G2		G1/4	9.5	29	13		17.6		17	6		23	3.09
PCF6-G3		G3/8	11	30.5	14.5		20.8		21	6.5		30	4.27
PCF8-G1	8	G1/8	7	27.2	10	13.7	13.8	18.2	14	5	7	16	2.73
PCF8-G2		G1/4	9.5	30.2	13		17.6		17	6		24	3.27
PCF8-G3		G3/8	11	31.7	14.5		20.8		21	6.5		32	4.36
PCF10-G2	10	G1/4	9.5	32.7	13	17.5	17.6	20.7	17	6	9	30	3.64
PCF10-G3		G3/8	11	34.2	14.5		20.8		21	6.5		38	4.55
PCF12-G2	12	G1/4	9.5	34.8	13.5	20.8	17.6	23.3	21	6.5	11	44	4.91
PCF12-G3		G3/8	11	36.8	14.5		20.8					20.8	46
PCF12-G4		G1/2	14	40.1	17.8		25		25	24		7	56
PCF16-G4	16	G1/2	14	41.6	18.8	25	25	24.8	25	7	15	69	12.73

※ Orifice dia. is figured out by converting the narrowest path to the diameter.

PMF Panel Mount Female Straight

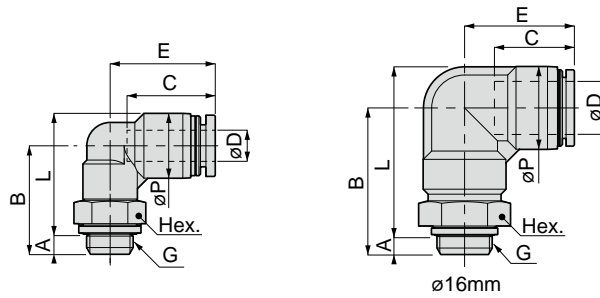


Unit : mm

Model	Tubing O.D. øD	G	M	B	E1	E2	A	Tube End C	øP	Hex.1	Hex.2	T1	T2	Orifice dia. (ømm)	Weight (g)	Price (\$)
PMF4-G1	4	G1/8	M12x1	24.2	9	9	7	14.9	13.8	14	14	4	5	3	17	4.00
PMF4-G2		G1/4		27.5		12.3	9.5		17.6		17		6		24	4.36
PMF6-G1	6	G1/8	M14x1	26.4	10.2	10	7	17	13.8	17	17	4	6	5	25	4.18
PMF6-G2		G1/4		28.7		12.3	9.5		17.6		21		6.5		27	4.36
PMF6-G3		G3/8		30.9		14.5	11		20.8		21		6.5		36	5.09
PMF8-G1	8	G1/8	M16x1	27	9.8	10	7	18.2	13.8	19	19	4	6	7	30	4.91
PMF8-G2		G1/4		30		13	9.5		17.6		21		6.5		34	5.09
PMF8-G3		G3/8		31.5		14.5	11		20.8		21		6.5		38	5.27
PMF10-G2	10	G1/4	M20x1	32.7	11.1	13	9.5	20.7	17.6	24	24	5	7	9	57	7.09
PMF10-G3		G3/8		34.2		14.5	11		20.8		24		7		7.45	
PMF12-G3	12	G3/8	M22x1	36.8	12.4	14.5	11	23.3	20.8	27	24	6	7	11	66	8.36
PMF12-G4		G1/2		40.1		17.8	14		25		24		7		70	10.73
PMF16-G4	16	G1/2	M27x1.5	42.6	15.4	17.3	14	24.8	25	32	29	9	8.5	15	116	21.82

※ Orifice dia. is figured out by converting the narrowest path to the diameter.

PL Elbow

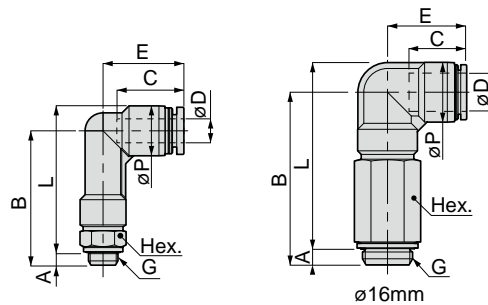


Unit : mm

Model	Tubing O.D. øD	G	A	B	L	øP	Tube End C	E	Hex.	Orifice dia. (ømm)	Weight (g)	Price (\$)	
PL4-G1	4	G1/8A	4.2	21.1	21.9	10	14.9	18.7	13	2.8	13	2.91	
PL6-G1	6	G1/8A	4.2	21.6	23.7	12.5	17	20.3	13	4.2	14	2.86	
PL6-G2		G1/4A	4.8	24.7	26.2			21.8	17		4.3		21
PL8-G1	8	G1/8A	4.2	22.1	25.2	14.5	18.1	22.7	13	6.7	15	3.27	
PL8-G2		G1/4A	4.8	24.7	27.2			23.7	17		23		3.73
PL8-G3		G3/8A	5.8	27.2	28.7			24.7	19		30		3.82
PL10-G2	10	G1/4A	4.8	25.2	29.2	17.5	20.2	26	17	8.3	26	4.41	
PL10-G3		G3/8A	5.8	28.2	31.2			27	19		33		4.77
PL10-G4		G1/2A	6.8	31.7	33.7			27.5	24		63		6.09
PL12-G2	12	G1/4A	4.8	26.5	32.2	21	23.4	29	17	8	29	5.36	
PL12-G3		G3/8A	5.8	28.7	33.4			29.7	19		37		5.55
PL12-G4		G1/2A	6.8	32.2	35.9			30.7	24		67		6.55
PL16-G3	16	G3/8A	5.8	44.2	50.9	25	24.1	33.1	24	11	77	11.82	
PL16-G4		G1/2A	6.8	45.2						13	75	12.18	

※ Orifice dia. is figured out by converting the narrowest path to the diameter.
 ※ "L" represents the length including the thickness of the gasket before installation. Actual dimension comes in 0.4mm shorter after installation since it is crushed by the thread being tightened.

PLL Long Elbow

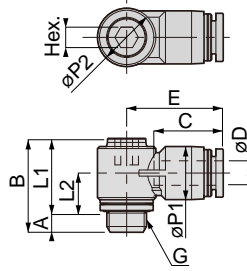


Unit : mm

Model	Tubing O.D. øD	G	A	B	L	øP	Tube End C	E	Hex.	Orifice dia. (ømm)	Weight (g)	Price (\$)	
PLL4-G1	4	G1/8A	4.2	33.1	33.9	10	14.9	18.7	13	2.8	14	4.00	
PLL6-G1	6	G1/8A	4.2	36.1	38.2	12.5	17	20.3	13	4.3	15	4.18	
PLL6-G2		G1/4A	4.8	39.2	40.7			21.8	17		25		4.73
PLL8-G1	8	G1/8A	4.2	38.6	41.7	14.5	18.1	22.7	13	6.7	17	4.45	
PLL8-G2		G1/4A	4.8	41.2	43.7			23.7	17		27		5.27
PLL8-G3		G3/8A	5.8	43.7	45.2			24.7	19		34		6.00
PLL10-G2	10	G1/4A	4.8	44.7	48.7	17.5	20.2	26	17	8	31	5.73	
PLL10-G3		G3/8A	5.8	47.7	50.7			27	19		37		6.36
PLL12-G3	12	G3/8A	5.8	51.7	56.4	21	23.4	29.7	19	10	41	8.64	
PLL12-G4		G1/2A	6.8	55.2	58.9				24		10.3		75
PLL16-G4	16	G1/2A	6.8	72.2	77.9	25	24.1	33.1	24	13	158	15.45	

※ Orifice dia. is figured out by converting the narrowest path to the diameter.
 ※ "L" represents the length including the thickness of the gasket before installation. Actual dimension comes in 0.4mm shorter after installation since it is crushed by the thread being tightened.

POL Hex. Key Banjo



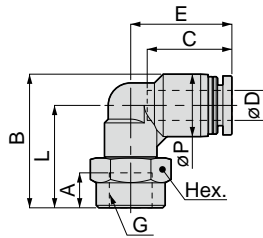
Unit : mm

Model	Tubing O.D. øD	G	A	B	L1	L2	øP1	øP2	Tube End C	E	Hex.	Orifice dia. (ømm)	Weight (g)	Price (\$)
POL6-G1	6	G1/8A	5.1	23	17.9	9.4	13	14.3	17	23.7	5	4	15	4.27
POL6-G2		G1/4A	5.6	23.5									19	4.82
POL8-G1	8	G1/8A	5.1	26	20.9	9.9	14	17.9	18.1	26.7	8	5.6	22	4.45
POL8-G2		G1/4A	5.6	26.5									25	4.91
POL8-G3		G3/8A	6.6	28	21.4	10.4							33	6.64
POL10-G2	10	G1/4A	5.6	30.5	24.9	11.9	18	21.3	20.7	30.7	10	7.5	38	6.27
POL10-G3		G3/8A	6.6	32	25.4	12.4							45	6.64
POL12-G3	12	G3/8A	6.6	36	29.4	14.4	21	26.3	23.4	36.4	12	9.1	65	7.73
POL12-G4		G1/2A	7.6	37									75	8.36

※ Orifice dia. is figured out by converting the narrowest path to the diameter.

※ "L1" and "L2" are just reference dimensions. Actual dimension comes in 0.4mm shorter after installation since it is crushed by the thread being tightened.

PLF Female Elbow

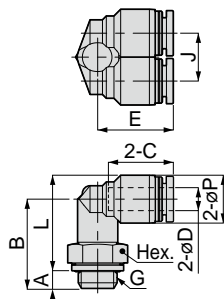


Unit : mm

Model	Tubing O.D. øD	G	A	B	L	øP	Tube End C	E	Hex.	Orifice dia. (ømm)	Weight (g)	Price (\$)
PLF4-G1	4	G1/8	7	25	20	10	14.9	18.7	14	2.8	14	3.45
PLF6-G1	6	G1/8	7	26.8	20.5	12.5	17	20.3	14	4.2	15	3.50
PLF6-G2		G1/4	9.5	31.3	25			21.8	17	4.3	22	3.82
PLF8-G1	8	G1/8	7	28.3	21	14.5	18.1	22.7	14	6	16	4.14
PLF8-G2		G1/4	9.5	32.3	25			23.7	17	6.7	24	4.41
PLF8-G3		G3/8	11	34.8	27.5			24.7	21		33	4.50
PLF10-G2	10	G1/4	9.5	34.3	25.5	17.5	20.2	26	17	8	27	5.64
PLF10-G3		G3/8	11	37.3	28.5			27	21	8.3	36	5.77

※ Orifice dia. is figured out by converting the narrowest path to the diameter.

PAX Twin Neck Elbow



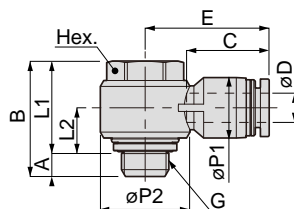
Unit : mm

Model	Tubing O.D. øD	G	A	B	L	øP	Tube End C	J	E	Hex.	Orifice dia. (ømm)	Weight (g)	Price (\$)
PAX4-G1	4	G1/8A	4.2	22.1	22.9	10	14.9	10.3	18.2	13	3.9	16	4.09
PAX6-G1	6	G1/8A	4.2	22.6	24.7	12.5	17	12.5	19.8	13	4.2	18	4.36
PAX6-G2		G1/4A	4.8	25.7	27.2				21.8	17	5.3	26	4.73
PAX8-G1	8	G1/8A	4.2	23.1	26.2	14.5	18.1	14.5	22.7	13	5.7	20	4.73
PAX8-G2		G1/4A	4.8	25.7	28.2				23.7	17	7.3	29	5.18
PAX8-G3		G3/8A	5.8	28.2	29.7				24.7	19		38	5.45
PAX10-G2	10	G1/4A	4.8	26.2	30.2	17.5	20.2	17.5	26	17	8	36	6.09
PAX10-G3		G3/8A	5.8	28.7	31.7				27	19	9.2	45	6.64
PAX12-G3	12	G3/8A	5.8	29.7	34.4	21	23.4	21	29.2	19	9.7	52	7.18
PAX12-G4		G1/2A	6.8	33.7	37.4				30.2	24	10.6	80	8.18

※ Orifice dia. is figured out by converting the narrowest path to the diameter.

※ "L" represents the length including the thickness of the gasket before installation. Actual dimension comes in 0.4mm shorter after installation since it is crushed by the thread being tightened.

PH Banjo



Unit : mm

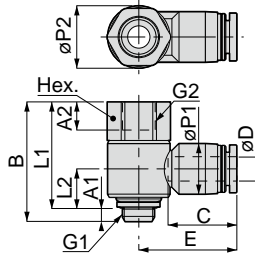
Model	Tubing O.D. øD	G	A	B	L1	L2	øP1	øP2	Tube End C	E	Hex.	Orifice dia. (ømm)	Weight (g)	Price (\$)
PH4-G1	4	G1/8A	5.1	23.7	18.6	8.7	10	18.4	14.9	23.4	14	3	22	3.18
PH6-G1	6	G1/8A	5.1	23.7	18.6	9	12.4	18.4	17	25.5	14	4	23	3.27
PH6-G2		G1/4A	5.6	28.6	23	10.4	14.5	22		29	19	5	44	4.18
PH8-G1	8	G1/8A	5.1	23.7	18.6	10	14.4	18.4	18.1	28.4	14	5.6	25	4.18
PH8-G2		G1/4A	5.6	28.6	23	10.4	14.5	22		28.9	19	6	45	4.73
PH8-G3		G3/8A	6.6	33.1	26.5	12.6	14.4	28		31	23.8		71	5.73
PH10-G2	10	G1/4A	5.6	28.6	23	11.7	17.6	22	20.2	31.2	19	7	48	5.45
PH10-G3		G3/8A	6.6	33.1	26.5	12.6		28		33.6	23.8	8	74	6.00
PH12-G3	12	G3/8A	6.6	33.1	26.5	14.3	21	28	23.4	36.4	23.8	8.7	77	7.64
PH12-G4		G1/2A	7.6	34	26.4			31		37.9	27		99	7.91
PH16-G4	16	G1/2A	7.6	43.1	35.5	17.2	25	31	24.1	38.1	27	13	115	16.64

※ Orifice dia. is figured out by converting the narrowest path to the diameter.

※ "L1" and "L2" are just reference dimensions. Actual dimension comes in 0.4mm shorter after installation since it is crushed by the thread being tightened.

PHF Link-up Banjo

2 ports



Unit : mm

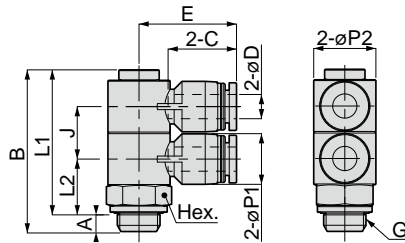
Model	Tubing O.D. øD	G1(A),G2	A1	A2	B	L1	L2	øP1	øP2	Tube End C	E	Hex.	Orifice dia. (ømm)	Weight (g)	Price (\$)
PHF4-G1	4	G1/8(A)	5.1	7	26	20.9	8.7	10	18.4	14.9	23.4	14	3	20	5.00
PHF6-G1	6	G1/8(A)	5.1	7	26	20.9	9	12.4	18.4	17	25.5	14	4	21	5.18
PHF6-G2		G1/4(A)	5.6	9.5	33.2	27.6	10.4	14.5	22		29	19	5	43	6.00
PHF8-G1	8	G1/8(A)	5.1	7	26	20.9	10	14.4	18.4	18.1	28.4	14	6	23	5.36
PHF8-G2		G1/4(A)	5.6	9.5	33.2	27.6	10.4	14.5	22		28.9	19		44	6.18
PHF8-G3		G3/8(A)	6.6	11	38.1	31.5	12.6	14.4	28		31	23.8	71	9.18	
PHF10-G2	10	G1/4(A)	5.6	9.5	33.2	27.6	11.7	17.6	22	20.2	31.2	19	7	47	6.55
PHF10-G3		G3/8(A)	6.6	11	38.1	31.5	12.6		28		33.6	23.8	8	74	9.36
PHF12-G3	12	G3/8(A)	6.6	11	38.1	31.5	14.3	21	28	23.4	36.4	23.8	8.7	77	9.55
PHF12-G4		G1/2(A)	7.6	14	42.8	35.2	14.3		31		37.9	27		99	10.82

※ Orifice dia. is figured out by converting the narrowest path to the diameter.

※ "L1" and "L2" are just reference demensions. Actual dimension comes in 0.4mm shorter after installation since it is crushed by the thread being tightened.

PHW Double Banjo

2 ports



Unit : mm

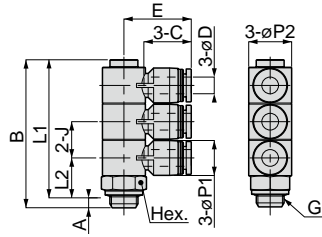
Model	Tubing O.D. øD	G	A	B	L1	L2	J	øP1	øP2	Tube End C	E	Hex.	Orifice dia. (ømm)	Weight (g)	Price (\$)
PHW4-G1	4	G1/8A	5.1	40.6	35.5	13.4	13	10	15.4	14.9	22.2	14	3	25	7.82
PHW6-G1	6	G1/8A	5.1	40.6	35.5	13.4	13	12.5	15.4	17	24.2	14	4.1	27	8.27
PHW6-G2		G1/4A	5.6	42.1	36.5	14.4						17		36	9.00
PHW8-G1	8	G1/8A	5.1	45.6	40.5	15.4	15	14.5	19	18.1	27.7	17	6	43	9.18
PHW8-G2		G1/4A	5.6	46.1										44	9.45
PHW8-G3		G3/8A	6.6	47.6	41	15.9						19		53	10.00
PHW10-G2	10	G1/4A	5.6	54.1	48.5	18.9	18	17.5	23	20.2	31.7	22	7.5	77	10.27
PHW10-G3		G3/8A	6.6	55.6	49	19.4								79	10.36
PHW12-G3	12	G3/8A	6.6	65.8	59.2	24.2	21.6	21	27	23.4	36.7	27	10	135	10.73
PHW12-G4		G1/2A	7.6	66.8	59.2	24.2								140	11.45

※ Orifice dia. is figured out by converting the narrowest path to the diameter.

※ "L1" and "L2" are just reference demensions. Actual dimension comes in 0.4mm shorter after installation since it is crushed by the thread being tightened.

PHT Triple Banjo

3
ports



Unit : mm

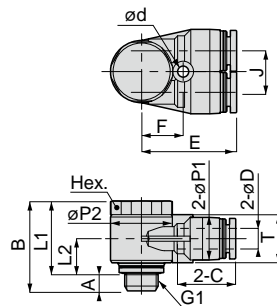
Model	Tubing O.D. øD	G	A	B	L1	L2	J	øP1	øP2	Tube End C	E	Hex.	Orifice dia. (ømm)	Weight (g)	Price (\$)
PHT4-G1	4	G1/8A	5.1	53.7	48.6	13.4	13	10	15.4	14.9	22.2	14	3	32	11.09
PHT6-G1	6	G1/8A	5.1	53.7	48.6	13.4	13	12.5	15.4	17	24.2	14	4.1	35	11.27
PHT6-G2		G1/4A	5.6	55.2	49.6	14.4								17	43
PHT8-G1	8	G1/8A	5.1	60.7	55.6	15.4	15	14.5	19	18.1	27.7	17	6	55	13.00
PHT8-G2		G1/4A	5.6	61.2										56	13.18
PHT8-G3		G3/8A	6.6	62.7	56.1	15.9						19		65	13.82
PHT10-G2	10	G1/4A	5.6	72.2	66.6	18.9	18	17.5	23	20.2	31.7	22	7.5	96	15.09
PHT10-G3		G3/8A	6.6	73.7	67.1	19.4								98	15.45
PHT12-G3	12	G3/8A	6.6	87.5	80.9	24.2	21.6	21	27	23.4	36.7	27	10	167	16.64
PHT12-G4		G1/2A	7.6	88.5										171	18.27

※ Orifice dia. is figured out by converting the narrowest path to the diameter.

※ "L1" and "L2" are just reference demensions. Actual dimension comes in 0.4mm shorter after installation since it is crushed by the thread being tightened.

PA Twin Neck Banjo

2
ports



Unit : mm

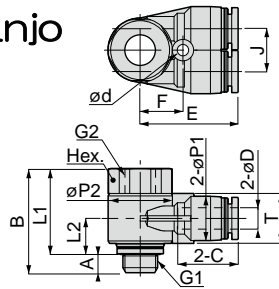
Model	Tubing O.D. øD	G	A	B	L1	L2	øP1	øP2	Tube End C	J	E	ød	F	T	Hex.	Orifice dia. (ømm)	Weight (g)	Price (\$)
PA6-G1	6	G1/8A	5.1	26.2	21.1	10.1	12.4	18	17	12	27.5	3.2	12	14	17	4.6	31	4.82
PA8-G2	8	G1/4A	5.6	28.4	22.8	10.8	14.4	22	18.1	14	30.9	3.2	14	15	19	6	48	6.55
PA10-G3	10	G3/8A	6.6	33.4	26.8	12.8	17.6	24	20.2	17	34	4.2	15.5	18	21	7.1	73	9.09
PA12-G4	12	G1/2A	7.6	37.4	29.8	14.3	21	30	23.4	20.5	38.9	4.2	18.5	21	27	10	123	11.36

※ Orifice dia. is figured out by converting the narrowest path to the diameter.

※ "L1" and "L2" are just reference demensions. Actual dimension comes in 0.4mm shorter after installation since it is crushed by the thread being tightened.

PAF Link-up Twin Neck Banjo

3 ports



Unit : mm

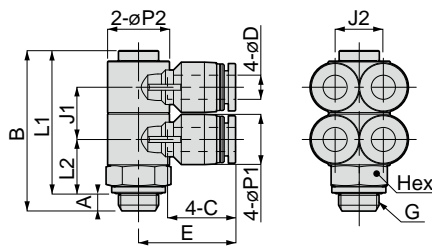
Model	Tubing O.D. øD	G1(A),G2	A1	A2	B	L1	L2	øP1	øP2	Tube End C	J	E	ød	F	T	Hex.	Orifice dia. (ømm)	Weight (g)	Price (\$)
PAF6-G1	6	G1/8A	5.1	7	29.2	24.1	10.1	12.4	18	17	12	27.5	3.2	12	14	17	4.6	32	5.73
PAF8-G2	8	G1/4A	5.6	9.5	32.9	27.3	10.8	14.4	22	18.1	14	30.9	3.2	14	15	19	6	47	7.45
PAF10-G3	10	G3/8A	6.6	11	41.4	34.8	12.8	17.6	24	20.2	17	34	4.2	15.5	18	21	7.1	72	10.45
PAF12-G4	12	G1/2A	7.6	14	47.4	39.8	14.3	21	30	23.4	20	38.9	4.2	18.5	21	27	10	127	12.82

※ Orifice dia. is figured out by converting the narrowest path to the diameter.

※ "L1" and "L2" are just reference dimensions. Actual dimension comes in 0.4mm shorter after installation since it is crushed by the thread being tightened.

PAW Double Twin Neck Banjo

4 ports



Unit : mm

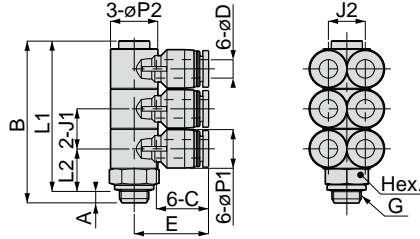
Model	Tubing O.D. øD	G	A	B	L1	L2	J1	J2	øP1	øP2	Tube End C	E	Hex.	Orifice dia. (ømm)	Weight (g)	Price (\$)
PAW4-G1	4	G1/8A	5.1	40.6	35.5	13.4	13	10	10	15.4	14.9	22.2	14	3	30	9.64
PAW6-G1	6	G1/8A	5.1	40.6	35.5	13.4	13	12	12.5	15.4	17	24.2	14	3.7	34	9.91
PAW6-G2		G1/4A	5.6	42.1	36.5	14.4									42	10.64
PAW8-G1	8	G1/8A	5.1	45.6	40.5	15.4	15	14	14.5	19	18.1	27.7	17	6	53	11.36
PAW8-G2		G1/4A	5.6	46.1	40.5	15.4									54	11.64
PAW8-G3		G3/8A	6.6	47.6	41	15.9									63	11.91
PAW10-G2	10	G1/4A	5.6	54.1	48.5	18.9	18	17	17.5	23	20.2	31.7	22	7.5	92	12.82
PAW10-G3		G3/8A	6.6	55.6	49	19.4									94	13.18
PAW12-G3	12	G3/8A	6.6	65.8	59.2	24.2	21.6	20	21	27	23.4	36.7	27	9.7	158	13.82
PAW12-G4		G1/2A	7.6	66.8											162	14.64

※ Orifice dia. is figured out by converting the narrowest path to the diameter.

※ "L1" and "L2" are just reference dimensions. Actual dimension comes in 0.4mm shorter after installation since it is crushed by the thread being tightened.

PAT Triple Twin Neck Banjo

6 ports



Unit : mm

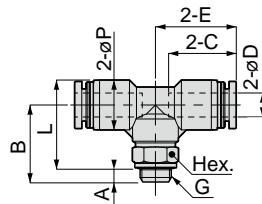
Model	Tubing O.D. ϕD	G	A	B	L1	L2	J1	J2	$\phi P1$	$\phi P2$	Tube End C	E	Hex.	Orifice dia. (ϕmm)	Weight (g)	Price (\$)
PAT4-G1	4	G1/8A	5.1	53.7	48.6	13.4	13	10	10	15.4	14.9	22.2	14	3	39	12.18
PAT6-G1	6	G1/8A	5.1	53.7	48.6	13.4	13	12	12.5	15.4	17	24.2	14	3.7	45	12.64
PAT6-G2		G1/4A	5.6	55.2	49.6	14.4							17		53	13.55
PAT8-G1	8	G1/8A	5.1	60.7	55.6	15.4	15	14	14.5	19	18.1	27.7	17	6	70	14.55
PAT8-G2		G1/4A	5.6	61.2									19		71	14.73
PAT8-G3		G3/8A	6.6	62.7									56.1		15.9	19
PAT10-G2	10	G1/4A	5.6	72.2	66.6	18.9	18	17	17.5	23	20.2	31.7	22	7.5	119	19.00
PAT10-G3		G3/8A	6.6	73.7	67.1	19.4									122	19.09
PAT12-G3	12	G3/8A	6.6	87.5	80.9	24.2	21.6	20	21	27	23.4	36.7	27	9.7	201	21.18
PAT12-G4		G1/2A	7.6	88.5											205	23.27

※ Orifice dia. is figured out by converting the narrowest path to the diameter.

※ "L1" and "L2" are just reference dimensions. Actual dimension comes in 0.4mm shorter after installation since it is crushed by the thread being tightened.

PB Tee

2 ports



Unit : mm

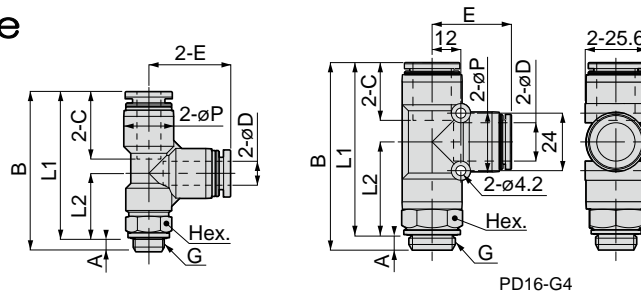
Model	Tubing O.D. ϕD	G	A	B	L	ϕP	Tube End C	E	Hex.	Orifice dia. (ϕmm)	Weight (g)	Price (\$)
PB4-G1	4	G1/8A	4.2	21.1	21.9	10	14.9	18.7	13	2.8	15	4.09
PB6-G1	6	G1/8A	4.2	21.6	23.7	12.5	17	20.25	13	4.2	17	4.32
PB6-G2		G1/4A	4.8	24.7	26.2			21.75	17	4.3	24	4.68
PB8-G1	8	G1/8A	4.2	22.1	25.2	14.5	18.1	22.7	13	6	19	4.73
PB8-G2		G1/4A	4.8	24.7	27.2			23.7	17	6.7	27	5.18
PB8-G3		G3/8A	5.8	27.2	28.7			24.7	19		34	5.45
PB10-G2	10	G1/4A	4.8	25.2	29.2	17.5	20.2	26	17	8	33	6.05
PB10-G3		G3/8A	5.8	28.2	31.2			27	19	8.3	41	6.64
PB12-G3	12	G3/8A	5.8	28.7	33.4	21	23.4	29.7	19	10	47	7.18
PB12-G4		G1/2A	6.8	32.2	35.9			30.7	24	10.3	78	8.18
PB16-G3	16	G3/8A	5.8	44.2	50.9	25	24.1	33.1	24	11	97	15.82
PB16-G4		G1/2A	6.8	45.2						13	95	16.18

※ Orifice dia. is figured out by converting the narrowest path to the diameter.

※ "L" represents the length including the thickness of the gasket before installation. Actual dimension comes in 0.4mm shorter after installation since it is crushed by the thread being tightened.

PD Branch Tee

2 ports



Unit : mm

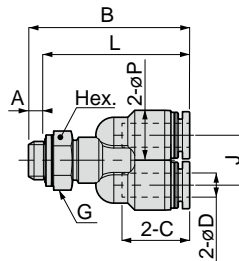
Model	Tubing O.D. øD	G	A	B	L1	L2	øP	Tube End C	E	Hex.	Orifice Ida. (ømm)	Weight (g)	Price (\$)
PD4-G1	4	G1/8A	4.2	39.3	35.1	17.9	10	14.9	17.2	13	2.8	15	4.09
PD6-G1	6	G1/8A	4.2	42.4	38.2	17.7	12.5	17	20.5	13	4.3	17	4.32
PD6-G2		G1/4A	4.8	45.5	40.7	20.2				17		24	4.68
PD8-G1	8	G1/8A	4.2	45	40.8	17.9	14.5	18.1	22.9	13	6	19	4.73
PD8-G2		G1/4A	4.8	48.4	43.6	20.7				17		27	5.18
PD8-G3		G3/8A	5.8	51.6	45.8	22.9				19		34	5.45
PD10-G2	10	G1/4A	4.8	51.4	46.6	20.4	17.5	20.2	26.2	17	8	33	6.05
PD10-G3		G3/8A	5.8	54.4	48.6	22.4				19		41	6.64
PD12-G3	12	G3/8A	5.8	59.7	53.9	23.4	21	23.4	30.5	19	10	48	7.18
PD12-G4		G1/2A	6.8	63.2	56.4	25.9			30.7			24	10.3
PD16-G4	16	G1/2A	6.8	78.3	71.5	38.4	25	24.1	33.1	24	13	89	16.18

※ Orifice dia. is figured out by converting the narrowest path to the diameter.

※ "L1" and "L2" are just reference dimensions. Actual dimension comes in 0.4mm shorter after installation since it is crushed by the thread being tightened.

PX Branch Y

2 ports



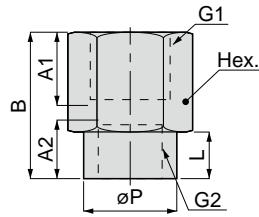
Unit : mm

Model	Tubing O.D. øD	G	A	B	L	øP	Tube End C	J	Hex.	Orifice dia. (ømm)	Weight (g)	Price (\$)
PX4-G1	4	G1/8A	4.2	37.5	33.3	10	14.9	10.3	13	3.1	15	4.09
PX6-G1	6	G1/8A	4.2	40.4	36.2	12.5	17	12.5	13	4.2	17	4.36
PX6-G2		G1/4A	4.8	45	40.2				17		25	4.73
PX8-G1	8	G1/8A	4.2	44.2	40	14.5	18.1	14.5	13	5.9	20	4.73
PX8-G2		G1/4A	4.8	46	41.2				17		28	5.18
PX8-G3		G3/8A	5.8	48.7	42.9				19		35	5.45
PX10-G2	10	G1/4A	4.8	50.3	45.5	17.5	20.2	17.5	17	7.2	35	6.05
PX10-G3		G3/8A	5.8	52.9	47.1				19		42	6.64
PX12-G3	12	G3/8A	5.8	56.8	51	21	23.4	21	19	8.4	50	7.18
PX12-G4		G1/2A	6.8	60.4	53.6				24		80	8.18

※ Orifice dia. is figured out by converting the narrowest path to the diameter.

※ "L" represents the length including the thickness of the gasket before installation. Actual dimension comes in 0.4mm shorter after installation since it is crushed by the thread being tightened.

PFF Female Thread Fitting

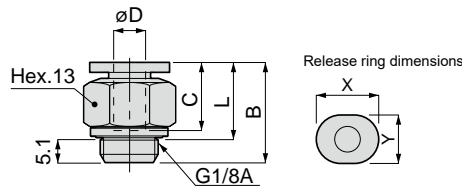


Unit : mm

Model	G1	G2	A1	A2	B	L	øP	Hex.	Orifice dia. (ømm)	Weight (g)	Price (\$)
PFFG1-M5	G1/8	M5x0.8	7	4.5	17	7	8	14	4.2	12	1.82
PFFG2-G1	G1/4	G1/8	9	7	21	8	14	17	6.5	22	2.18
PFFG3-G2	G3/8	G1/4	11	9	25	11	17	21	9	34	2.91
PFFG4-G3	G1/2	G3/8	14	11	33	14	21	24	12	55	3.64

※ Orifice dia. is figured out by converting the narrowest path to the diameter.

PC Straight
Mini

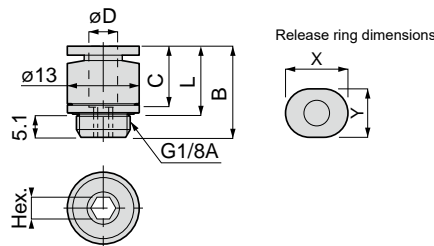


Unit : mm

Model	Tubing O.D. øD	B	L	Tube End C	X	Y	Orifice dia. (ømm)	Weight (g)	Price (\$)
PC4-G1M	4	15.8	10.7	10.9	9.8	7.8	2.5	9.4	1.91
PC6-G1M	6	18.1	13	11.7	11.8	9.8	4	11	2.00

※ Orifice dia. is figured out by converting the narrowest path to the diameter.
 ※ "L" represents the length including the thickness of the gasket before installation. Actual dimension comes in 0.4mm shorter after installation since it is crushed by the thread being tightened.

POC Hex. Key Straight
Mini

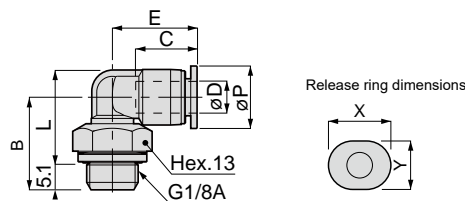


Unit : mm

Model	Tubing O.D. øD	B	L	Tube End C	Hex.	X	Y	Orifice dia. (ømm)	Weight (g)	Price (\$)
POC4-G1M	4	15.8	10.7	10.9	3	9.8	7.8	3.1	8.9	2.18
POC6-G1M	6	18.1	13	11.7	4	11.8	9.8	4.2	9.5	2.36

※ Orifice dia. is figured out by converting the narrowest path to the diameter.
 ※ "L" represents the length including the thickness of the gasket before installation. Actual dimension comes in 0.4mm shorter after installation since it is crushed by the thread being tightened.

PL Elbow
Mini

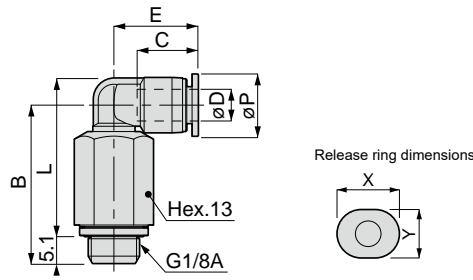


Unit : mm

Model	Tubing O.D. øD	B	L	øP	Tube End C	E	X	Y	Orifice dia. (ømm)	Weight (g)	Price (\$)
PL4-G1M	4	16.5	15.4	8	11	15.1	9.8	7.8	2.5	9	2.82
PL6-G1M	6	17.5	17.7	10.5	11.6	16	11.8	9.8	4	9.7	2.86

※ Orifice dia. is figured out by converting the narrowest path to the diameter.
 ※ "L" represents the length including the thickness of the gasket before installation. Actual dimension comes in 0.4mm shorter after installation since it is crushed by the thread being tightened.

PLL Long Elbow
Mini

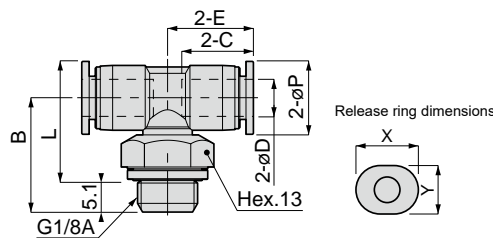


Unit : mm

Model	Tubing O.D. øD	B	L	øP	Tube End C	E	X	Y	Orifice dia. (ømm)	Weight (g)	Price (\$)
PLL4-G1M	4	29	27.9	8	11	15.1	9.8	7.8	2.5	23	4.00
PLL6-G1M	6	30	30.2	10.5	11.6	16	11.8	9.8	4	23	4.36

※ Orifice dia. is figured out by converting the narrowest path to the diameter.
 ※ "L" represents the length including the thickness of the gasket before installation. Actual dimension comes in 0.4mm shorter after installation since it is crushed by the thread being tightened.

PB Tee
Mini

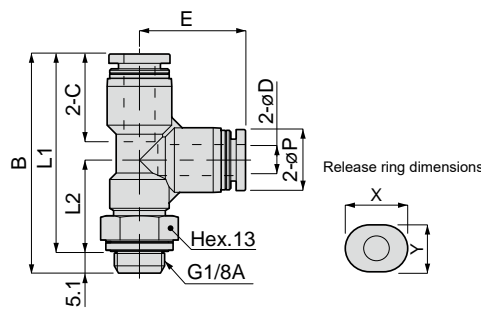


Unit : mm

Model	Tubing O.D. øD	B	L	øP	Tube End C	E	X	Y	Orifice dia. (ømm)	Weight (g)	Price (\$)
PB4-G1M	4	17.5	16.4	8	11	12.5	9.8	7.8	2.5	10	4.00
PB6-G1M	6	18.5	18.7	10.5	11.6	13.9	11.8	9.8	4	12	4.32

※ Orifice dia. is figured out by converting the narrowest path to the diameter.
 ※ "L" represents the length including the thickness of the gasket before installation. Actual dimension comes in 0.4mm shorter after installation since it is crushed by the thread being tightened.

PD Branch Tee
Mini



Unit : mm

Model	Tubing O.D. øD	B	L1	L2	øP	Tube End C	E	X	Y	Orifice dia. (ømm)	Weight (g)	Price (\$)
PD4-G1M	4	30.6	25.5	12.4	8	11	13.1	9.8	7.8	2.5	10	4.00
PD6-G1M	6	33.5	28.4	13.4	10.5	11.6	15	11.8	9.8	4	12	4.32

※ Orifice dia. is figured out by converting the narrowest path to the diameter.
 ※ "L1" and "L2" are just reference demensions. Actual dimension comes in 0.4mm shorter after installation since it is crushed by the thread being tightened.